



ARB® N_SIGHT™ MOBILE



With ARB N_SIGHT, all of your options are open. Mix and match various elements of data collection technologies from manual key entry to targeted fixed base RF AMR in one powerful integrated package.

Neptune has a long, successful history of providing utilities with innovative solutions for their meter reading processes. Neptune's latest utility automation software, ARB® N_SIGHT™ Mobile, manages the meter reading and work order processes by guiding meter readers along their routes, minimizing errors, and improving data capture accuracy and efficiency. Neptune has incorporated many customer-driven enhancements that include automatic web updates, multi-level security, and enhanced reporting functionality. Most importantly, N_SIGHT Mobile integrates seamlessly with Neptune's ARB® N_SIGHT™ FixedBase software, allowing both mobile and fixed base AMR systems to operate in parallel (ARB® Hybrid™).

ARB N_SIGHT Mobile is an extremely flexible software application that provides significant scalability. It can be operated as a Client/Server environment where multiple workstations and remote offices can be efficiently networked across the utility's LAN or WAN architecture.

To ensure that new customers have a seamless transition from their existing system to Neptune's N_SIGHT Mobile, the software offers a File Transfer Utility that allows utilities to use their current CIS/billing interface. This customizable bridge is an integrated part of the software.

From exchanging files with the utility customer information system (CIS) to communicating route information to data collection devices, ARB N_SIGHT Mobile software manages the entire process with the greatest of ease through its simple and intuitive graphical interface.

- Route information is quickly imported from the CIS into the ARB N_SIGHT Mobile database and prepared for assignment to either handheld or mobile data collectors. Routes can be split or grouped before assignment to handheld data collectors. When used with ARB N_SIGHT FixedBase software, the N_SIGHT Mobile software extracts required meter reading information from the FixedBase software database.
- Meter readings captured in the field are stored in the handheld or mobile data collector until it is returned from the field and unloaded into ARB N_SIGHT Mobile for processing prior to being transferred to the CIS for billing purposes.
- As a safety precaution, N_SIGHT Mobile provides the capability to back up copies of the meter reading data.
- Upon conclusion of the various data processing operations, completed route information is transferred to the CIS for billing purposes.

KEY FEATURES

- Integrated meter reading and electronic work order processes
- Automatic web update
- Multi-level security
- Enhanced reporting functionality
- Supports ARB Hybrid and ARB® FixedBase™ Systems

KEY BENEFITS

- Integrates seamlessly with ARB N_SIGHT FixedBase software, allowing both mobile and fixed base systems to operate in parallel (ARB Hybrid)
- Supports standalone PC environments and network of multiple users and remote site configuration – scalable architecture
- Supports the E-Coder|R900i™ data logging units to provide a graph of consumption data for daily and/or hourly intervals, reverse flow, and leak status
- Provides water utilities with E-CoderPLUS value-added features such as leak detection, tamper detection, meter diagnostics, and flow diagnostics on separate reports
- The integrated electronic work order module allows utilities to automate their existing manual paper-based work order system
- Supports multiple data collection methods: manual keyed entry, probed encoders with Advantage II, and walk-by RF with handheld data collectors and mobile data collectors

ARB N_SIGHT Mobile software offers the following functionalities:

Meter Reading

Neptune's mobile meter reading solutions meet all the needs utilities have for monthly, bi-monthly, or quarterly billing cycles. Neptune's comprehensive, easy-to-use mobile host management software allows utilities to manage meter reading schedules regardless of size or industry type.

Electronic Work Order Module

The electronic work order module is designed to automate the manual processes associated with the completion of work orders. An interface file is created within the utility's CIS system and imported into the ARB N_SIGHT Mobile software. Customizable form sets are created within the software to replicate the forms that were previously printed and completed manually by the field service technician. The work order file is assigned to a field service technician and then loaded into the CE handheld device for processing. When the work order is complete, the CE handheld device is unloaded and the completed work order information is exported to a file that will interface to the utility's CIS system. By automating this process, the utility will decrease the amount of data entry errors and have an electronic representation of the completed work order for its records.

Automatic Web Update

The automatic web update is designed to keep customers current with the latest version of ARB N_SIGHT Mobile software. When connected to the Internet, the system will automatically check for updates. If updates are available, the user is alerted by a notification box prompting the user to download. The user then has the option to download the update immediately or schedule a

specific time to complete the process. The automatic web update will allow users to always have the latest version of ARB N_SIGHT Mobile software available and provides them the convenience of installing the updates at any given time.

Multi-Level Security

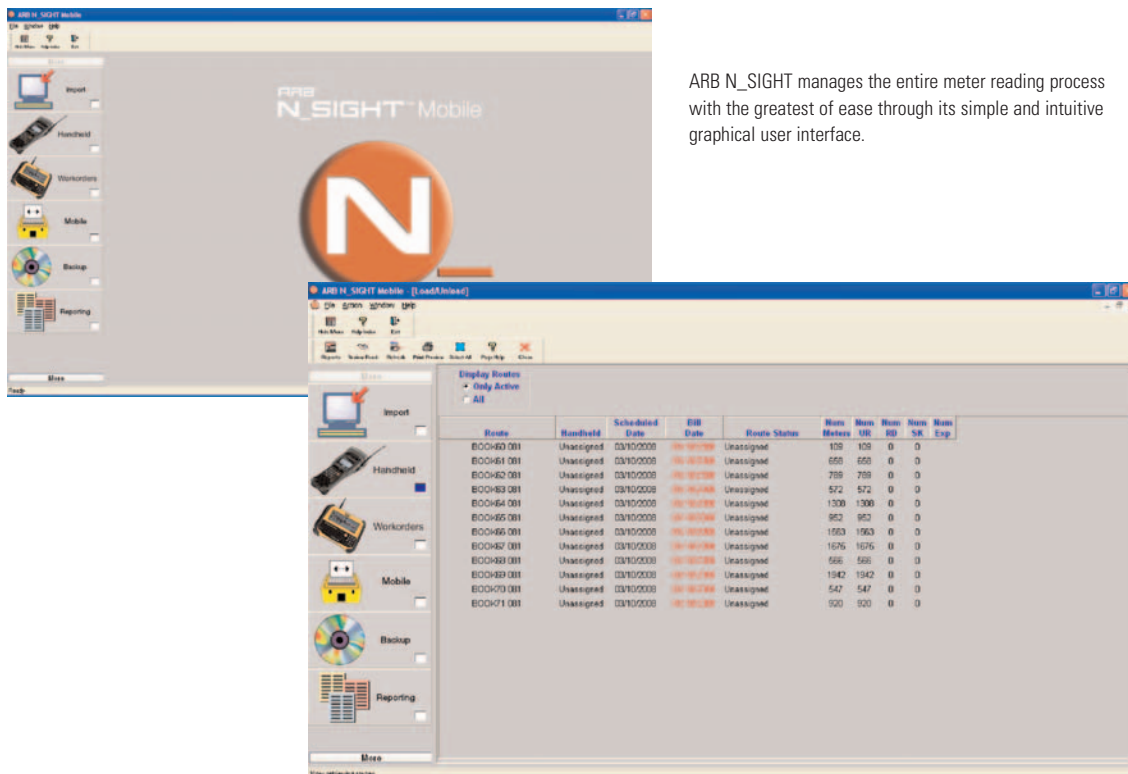
The multi-level security functionality is designed to secure the accessibility of customer information by controlling the rights of users during the log-in process. This functionality provides five predefined user levels that are controlled by the administrator at the utility. The administrator is responsible for determining which user has access to one of the five levels. The multi-level security functionality supports user accountability, accessibility, and assists with Sarbanes-Oxley compliance.

Management Reports

We have developed new standard reports and modified the data presentation of several existing reports.

- The E-Coder)R900/ Data Logging Report is a new report that displays a graph of consumption data for daily and/or hourly intervals, reverse flow, and leak status. This report supports our new E-Coder)R900/ Data Logging unit.
- The Fluid Conservation Systems (FCS) AMR Permalog® report is also a new report that generates leak status and leak confidence level data that can be used as part of a leak monitoring system.
- The E-Coder)R900/ report is now separated into three reports: the Reverse Flow Report, the Continuous Leak Report, and the Zero Consumption Report. Each of these reports prioritizes the event by category of severity.

All of these reports provide proactive means to settle customer disputes and serve as tools for water conservation initiatives.



ARB N_SIGHT manages the entire meter reading process with the greatest of ease through its simple and intuitive graphical user interface.



ARB_N_SIGHT seamlessly supports meter reading information collected from the TRX920™ and MRX920™ mobile data collectors. Route information is transferred from the TRX920/MRX920 to ARB N_SIGHT using a USB flash drive.



Not only is ARB N_SIGHT Mobile easy to implement, learn, and operate, it is backed by one of the most respected technical support groups in the industry. Neptune's Systems Support team is easily accessible through our toll-free number (1.800.647.4832). Neptune provides immediate access to qualified support staff who provide prompt, courteous, and conscientious assistance when customers need it most. All Support staff members are trained, knowledgeable professionals dedicated to ensure the highest level of support and customer satisfaction.

ARB N_SIGHT is an adaptable, cost-effective meter reading software solution designed to maximize revenues for multi-utility applications. Neptune designed ARB N_SIGHT Mobile to provide the highest level of data integrity and system integrity to the utility industry. Neptune's ARB N_SIGHT Mobile allows you the freedom to mix and match various elements of data collection technologies from mobile to hybrid systems in one powerful integrated system.

ARB N_SIGHT (1) supports both DOS and Windows CE handheld computers; (2) safeguards previous investments; and (3) is open to future technologies.

The minimum recommendation for the ARB N_SIGHT server computer installation includes:

- Windows Server 2000®/Windows Server 2003®
- Intel 800-MHz, Dual Pentium II 500-MHz or compatible processor or higher, depending on the system configuration
- 256 MB RAM (512 MB RAM or higher recommended), depending on the system configuration
- For dial-up: 56 kilobits per second (Kbps) or higher-speed modem
- For networking: Network adapter appropriate for the type of local-area, wide-area, wireless, or home network to be connected to, and access to an appropriate network infrastructure; access to third-party networks may require additional charges

- CD-ROM drive
- Video graphics adapter capable of 256 colors and 1024 X 768 pixels
- 4-gigabyte (GB) available hard disk space
- Neptune Technology Group Inc. recommends using a RAID configuration for the ARB N_SIGHT server installation. For RAID explanations see below.

Additional items required for automatic update option:

- For dial-up: 56 kilobits per second (Kbps) or higher-speed modem
- For networking and Web access: Network adapter appropriate for the type of local-area, wide-area, wireless, or home network to be connected to, and access to an appropriate network infrastructure; access to third-party networks may require additional charges

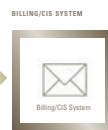
ENCODER RESISTERS AND BY AMR ENDPOINTS



FIELD DATA COLLECTION HARDWARE



ARB® Mobile™



UTILITY MANAGEMENT SYSTEMS™

The minimum hardware requirements for the ARB N_SIGHT Client computer include:

- Windows 2000®/Windows XP®/Windows Vista® Business
- Intel 800 megahertz (MHz) processor or faster
- Minimum 256 megabytes (MB) of RAM (512 MB is recommended)
- Minimum 1.5 gigabytes (GB) of available space on the hard disk
- CD-ROM or DVD-ROM drive
- Keyboard and a Microsoft Mouse or other compatible pointing device
- Video adapter and monitor with Super VGA (1024 X 768) or higher resolution

Additional items required for automatic update option:

- For dial-up: 56 kilobits per second (Kbps) or higher-speed modem
- For networking and Web access: Network adapter appropriate for the type of local area, wide-area, wireless, or home network to which you wish to connect, and access to an appropriate network infrastructure; access to third-party networks may require additional charges

RAID information paraphrased from Microsoft.com

RAID is two or more mirrored hard disks, depending on your system configuration. Hardware redundant array of independent disks (RAID). Use multiple fast-SCSI (small computer system interface) drives (7,200 RPM or faster) and individual SCSI disk controllers (at least one redundant controller) to improve I/O processing and read/write times. Spread your page file across multiple disks to improve virtual memory access. If you run SQL Server 2000 on your Small Business Server network, consider using hardware RAID.

RAID-0, disk striping (2 disks minimum) offers the best performance for both read and write but offers no fault tolerance. RAID-1, disk mirroring (2 disks minimum) provides excellent fault tolerance but only marginally improves read performance. RAID-5, disk striping with parity (3 disks minimum) provides good read performance and the best fault tolerance for the lowest price. RAID-0+1, mirrored disk striping (4 disks minimum) combines disk mirroring with striping and provides the highest read performance and the best combination of fault tolerance and performance. This option can be more expensive than other RAID options.

Neptune engages in ongoing research and development to improve and enhance its products. Therefore, Neptune reserves the right to change product or system specifications without notice.

Neptune Technology Group Inc.

1600 Alabama Highway 229
Tallahassee, AL 36078
USA
Tel: (800) 645-1892
Fax: (334) 283-7299

Neptune Technology Group (Canada) Ltd.

7275 West Credit Avenue
Mississauga, Ontario
L5N 5M9
Canada
Tel: (905) 858-4211
Fax: (905) 858-0428

Neptune Technology Group Inc.

Ejército Nacional No. 418
Piso 12, Desp. 1201-1202
Col. Chapultepec Morales
Delegación Miguel Hidalgo
11570 México, Distrito Federal
Tel: (525) 55203 5294 / (525) 55203 5708
Fax: (525) 55203 6503



NEPTUNE
TECHNOLOGY GROUP

neptunetg.com