



ARB® N_SIGHT™ AMR SOFTWARE



With ARB N_SIGHT AMR, all of your options are open. Mix and match various elements of data collection technologies from manual key entry to fixed network RF AMR in one powerful integrated package.

Neptune has a long, successful history of providing utilities with innovative solutions for their meter reading processes. Neptune's ARB® N_SIGHT™ AMR utility automation software manages the meter reading process by guiding meter readers along their routes, minimizing errors and improving data capture accuracy and efficiency.

ARB N_SIGHT AMR is an extremely flexible software application that provides significant scalability. It can be configured to operate within a Client/Server environment where multiple workstations and remote offices can be efficiently networked across the utility's LAN or WAN architecture.

To ensure that new customers have a seamless transition from their existing system to ARB N_SIGHT AMR, the software offers a File Transfer Utility that allows utilities to use their current customer information system (CIS)/billing interface. This customizable bridge is an integrated module that is a standard offering within the application.

From exchanging files with the utility CIS to communicating route information to data collection devices, ARB N_SIGHT AMR software manages the entire process with the greatest of ease through its simple and intuitive graphical interface.

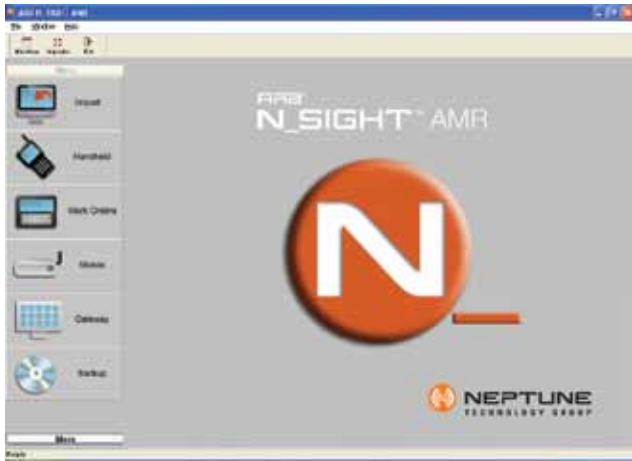
Many utilities are slowly migrating to fixed network technology to gain the benefits of the advanced data stream. Even though many utilities would like to migrate to an advanced system in large scales, Neptune understands that in the current economy, many utilities cannot afford to strand assets that are still operational. To assist utilities in managing both mobile and fixed network technology, Neptune integrates its ARB® FixedBase™ AMR and ARB® Mobile™ drive-by and handheld meter reading technology into one software application.

KEY SYSTEM FEATURES AND BENEFITS

- Integrated meter reading processes: supports handheld, mobile, and R900® Gateway data collection devices
- Automatic web updates
- Multi-level security
- Standard and customizable reporting functionality
- Routes can be split or grouped before assignment to meter reading devices
- Provides back-up capability of meter reading data
- Crucial information such as major reverse flow events and continuous leaks are displayed in a graphical format when used with the E-Coder/R900/™
- Graphical display of monthly, daily, and hourly consumption information
- System health screen for viewing system status at any time

ARB N_SIGHT AMR seamlessly supports meter reading information collected from the MRX920™ Mobile Data Collector or R900 Gateways. Route information is transferred from the MRX920 to ARB N_SIGHT AMR using a wireless connection or via a USB flash drive, and from R900 Gateways wirelessly.



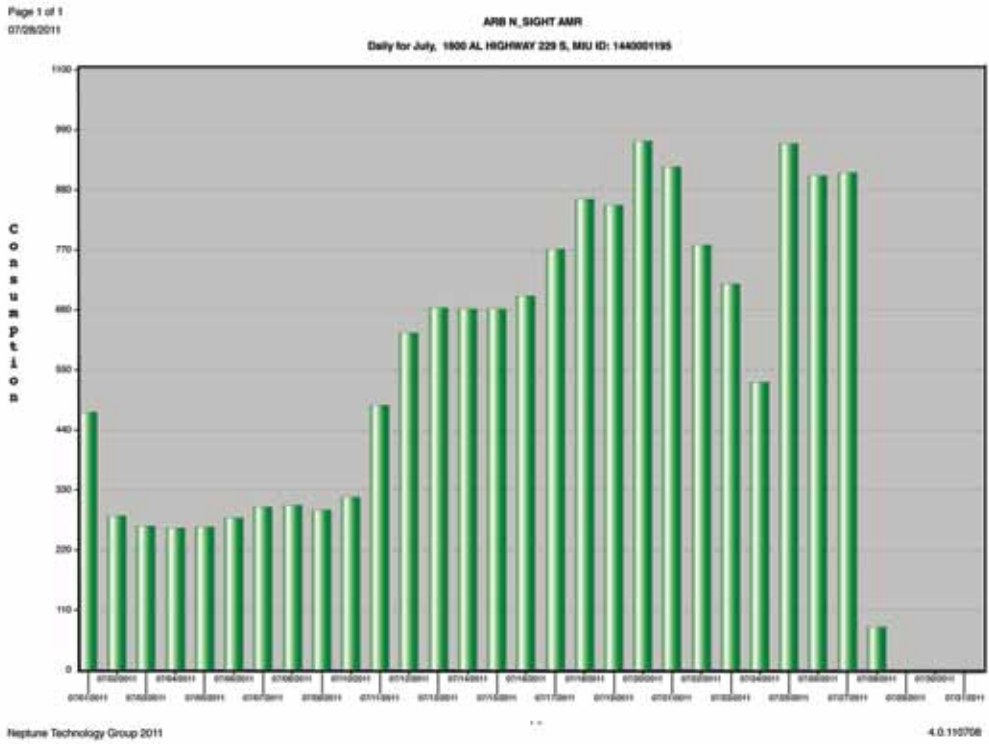


Neptune understands that the needs of utilities change and our technology evolves to meet those needs. Neptune's ultimate goal is to provide solutions that meet your needs and make the day-to-day tasks a little easier.

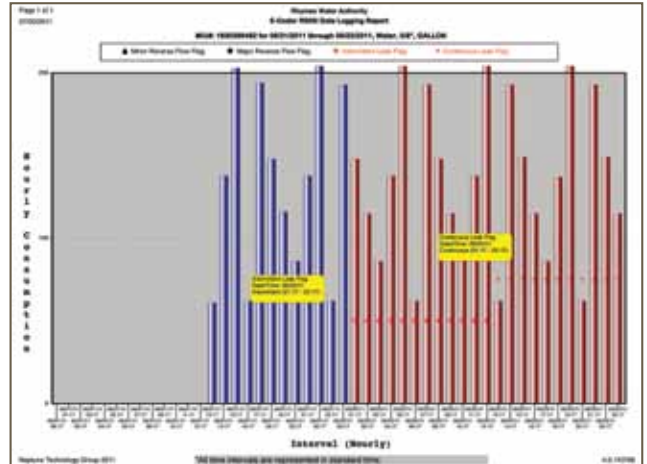
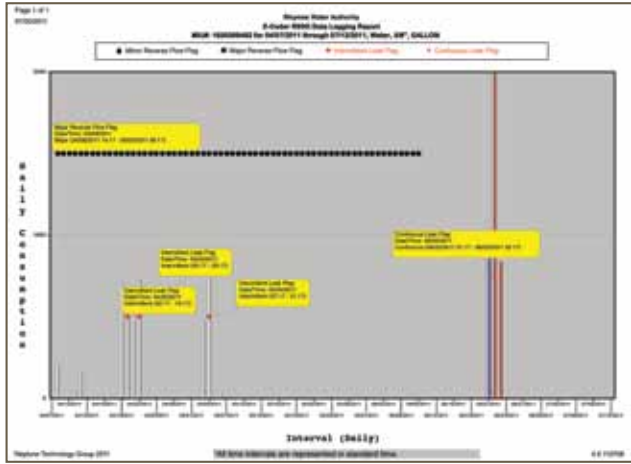
ARB N_SIGHT AMR is an adaptable, cost-effective meter reading software solution designed to maximize revenues for multi-utility applications. Neptune designed ARB N_SIGHT AMR to provide the highest level of data integrity and system integrity to the utility industry. Neptune's ARB N_SIGHT AMR allows you the freedom to mix and match various elements of data collection technologies from mobile to hybrid systems in one powerful, integrated system.

Not only is ARB N_SIGHT AMR easy to implement, learn, and operate, it is backed by one of the most respected customer support groups in the industry. Neptune's Systems Support team is easily accessible through our toll-free number (1-800-647-4832). Neptune provides immediate access to qualified support staff who provide prompt, courteous, and conscientious assistance when customers need it most. All support staff members are trained, knowledgeable professionals dedicated to ensuring the highest level of support and customer satisfaction.

ARB N_SIGHT AMR supports Neptune's handheld, mobile, and fixed network collection hardware devices. It also integrates with AMI technology for billing purposes.



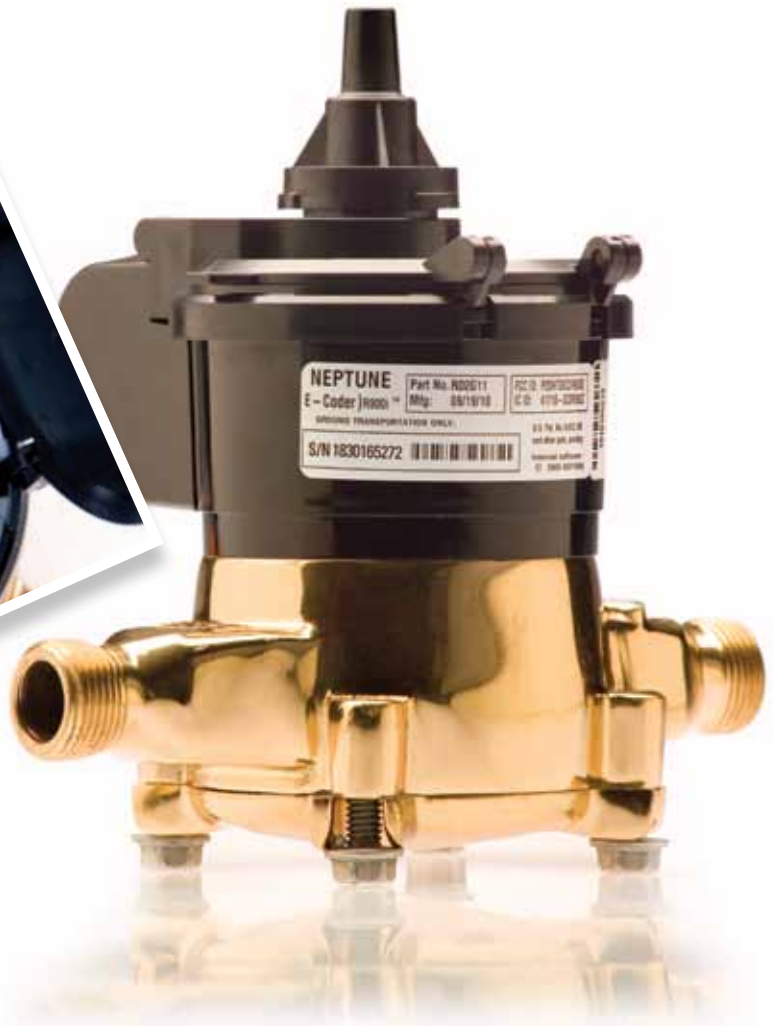
Graph represents R900 Gateway daily readings.



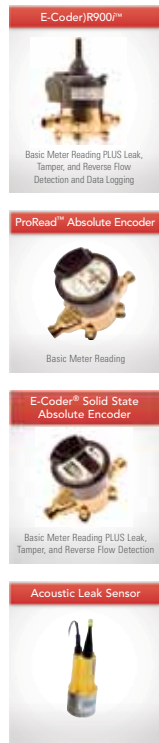
Graphs represent E-Coder)R900i data logging hourly and daily readings.

The E-Coder)R900i provides high resolution, 8-digit remote meter reading and data logging along with value-added features such as leak, tamper, and reverse flow detection. The data logging functionality provides up-to-the hour consumption data. Consumption is recorded as it happens, every hour on the hour, helping to identify existing or potential issues. Graphical charts can be generated within ARB N_SIGHT AMR to show a possible leak, backflow, or tamper event.

Using Neptune’s E-Coder)R900i with data logging, the utility can send a meter reader to retrieve up to 96 days of historical data directly from the meter and then download the information directly into ARB N_SIGHT AMR host software. The daily or hourly consumption can then be presented as a graph – justifying the amount charged on the bill. This feature is a tool that can assist water utilities with high water bill complaints.



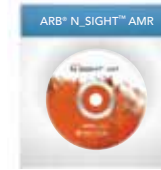
**Encoder Registers
And RF AMR Endpoints**



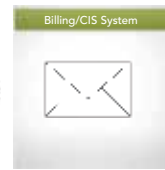
Field Data Collection Hardware



Host Management Software



Billing/CIS System



SERVER SPECIFICATIONS

The minimum recommendation for the ARB_N_SIGHT AMR server computer installation includes:

- Windows Server 2008®/Windows Server 2003®
- Intel Pentium 4 3.0-GHz or compatible processor or higher, depending on the system configuration
- 2 GB RAM (4 GB RAM or higher recommended), depending on the system configuration
- For dial-up: 56 kilobits per second (Kbps) or higher-speed modem
- For networking: Network adapter appropriate for the type of local-area, wide-area, wireless, or home network to be connected to, and access to an appropriate network infrastructure; access to third-party networks may require additional charges
- CD-ROM drive
- Video graphics adapter capable of 256 colors and 1024 X 768 pixels
- 10 GB available hard disk space (no R900 Gateways) or 250 GB available hard disk space (with R900 Gateways)
- Neptune recommends using a RAID configuration for the ARB_N_SIGHT server installation.

PC SPECIFICATIONS

The minimum hardware requirements for the ARB_N_SIGHT AMR client computer include:

- Windows XP® Professional/Windows Vista® Business/Windows 7 Professional
- Intel Pentium 4 3.0-GHz processor or faster
- Minimum 1 GB RAM (2 GB RAM or higher recommended), depending on the system configuration
- Minimum 5 GB of available space on the hard disk
- CD-ROM or DVD-ROM drive
- Keyboard and a Microsoft Mouse or other compatible pointing device
- Video adapter and monitor with Super VGA (1024 X 768) or higher resolution

Neptune Technology Group Inc.
1600 Alabama Highway 229
Tallahassee, AL 36078
USA
Tel: (800) 633-8754

Neptune Technology Group (Canada) Ltd.
7275 West Credit Avenue
Mississauga, Ontario
L5N 5M9
Canada
Tel: (905) 858-4211
Fax: (905) 858-0428

Neptune Technology Group Inc.
Ejército Nacional No. 418
Piso 12, Desp. 1201-1202
Col. Chapultepec Morales
Delegación Miguel Hidalgo
11570 México, Distrito Federal
Tel: (525) 55203 5294 / (525) 55203 5708
Fax: (525) 55203 6503

